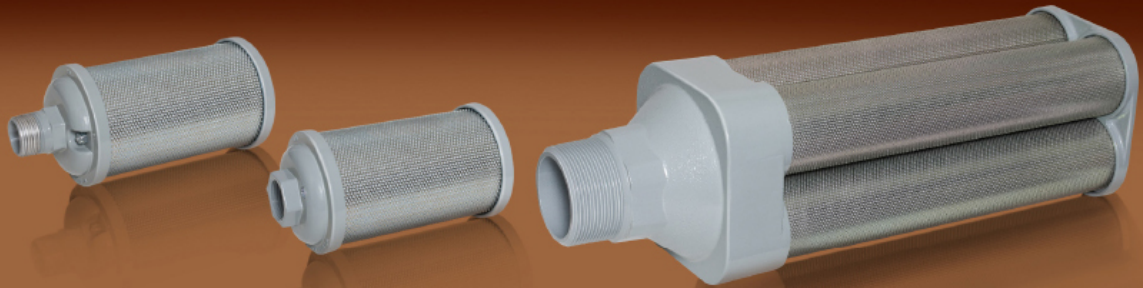
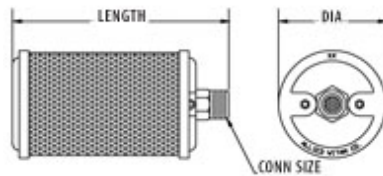


STEAM EXHAUST MUFFLERS

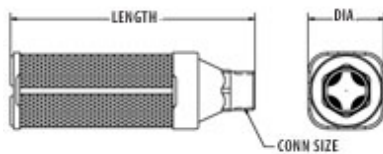


STEAM EXHAUST MUFFLERS

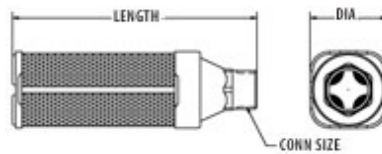
Single Chamber-Male
1/8" - 2"



Single Chamber-Female
1/8" - 2"



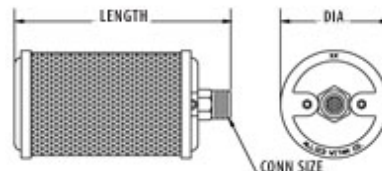
Multi-Chamber-Male
3" - 6"



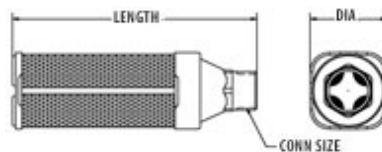
BOILER START-UPS AND FOOD PROCESSING

- Provides a lower cost alternative to silencing objectionable noise created by steam exhaust outlets during boiler start-ups and testing stages only
- Replacement elements available to make the muffler ready for the next start-up or tuning job
- Constructed of corrosion-resistant materials
- End caps treated with a special epoxy coating for additional resistance in high-alkali conditions
- Well-suited for low-pressure food processing and similar applications
- Not designed for permanent installation on boilers or where pressures exceed 125 psi (8.6 Bar)

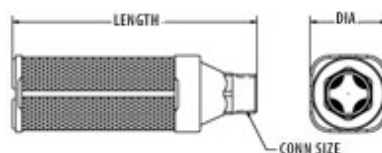
Single Chamber-Male
1/8" - 2"



Single Chamber-Female
1/8" - 2"



Multi-Chamber-Male
3" - 6"



Conn Size	Male NPT		Female NPS		Male BSPT		Diameter	Length		Replacement Element
	Model Type	Item Number	Model Type	Item Number	Model Type	Item Number		Male	Female	
Single Chamber										
1/8	S01	0114001	Z01	0214001	S01	0124001	1.84	3.12	2.81	0951001
1/4	S02	0114002	Z02	0214002	S02	0124002	1.84	4.37	4.00	0951002
3/8	S00	0114000	Z00	0214000	S00	0124000	2.59	5.12	4.56	0951000
1/2	S05	0114005	Z05	0214005	S05	0124005	3.15	6.00	5.50	0951005
3/4	S07	0114007	Z07	0214007	S07	0124007	3.40	7.18	6.68	0951007
1	S10	0114010	Z10	0214010	S10	0124010	3.90	8.75	7.92	0951010
1-1/4	S12	0114012	Z12	0214012	S12	0124012	3.90	8.75	8.00	0951012
1-1/2	S15	0114015	Z15	0214015	S15	0124015	5.25	13.56	12.50	0951015
2	S20	0114020	Z20	0214020	S20	0124020	5.25	18.87	17.75	0951020
Multi Chamber										
3	S30	0114030	-	-	S30	0124030	7.00	22.93	-	0951030
4	S40	0114040	-	-	S40	0124040	8.00	23.56	-	0951040
6	S60	0114060	-	-	S60	0124060	11.00	30.93	-	0951060